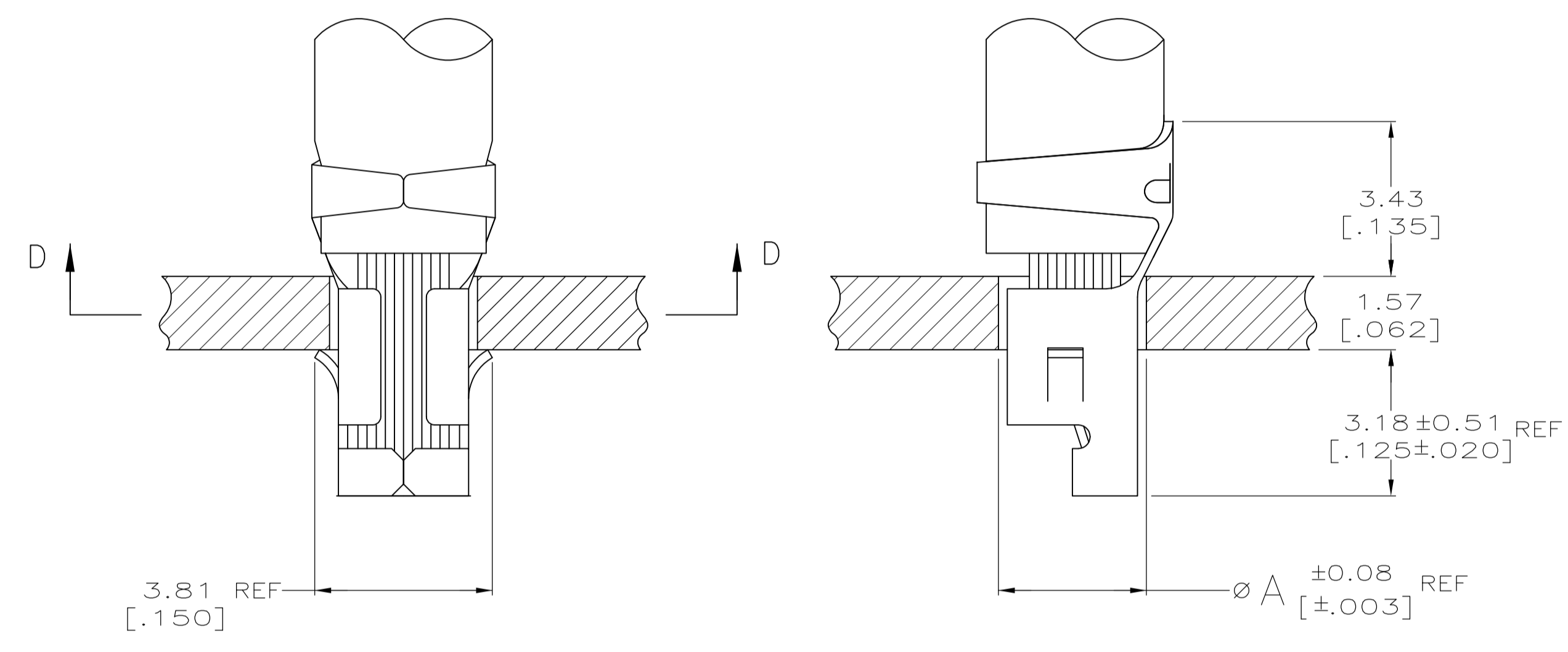
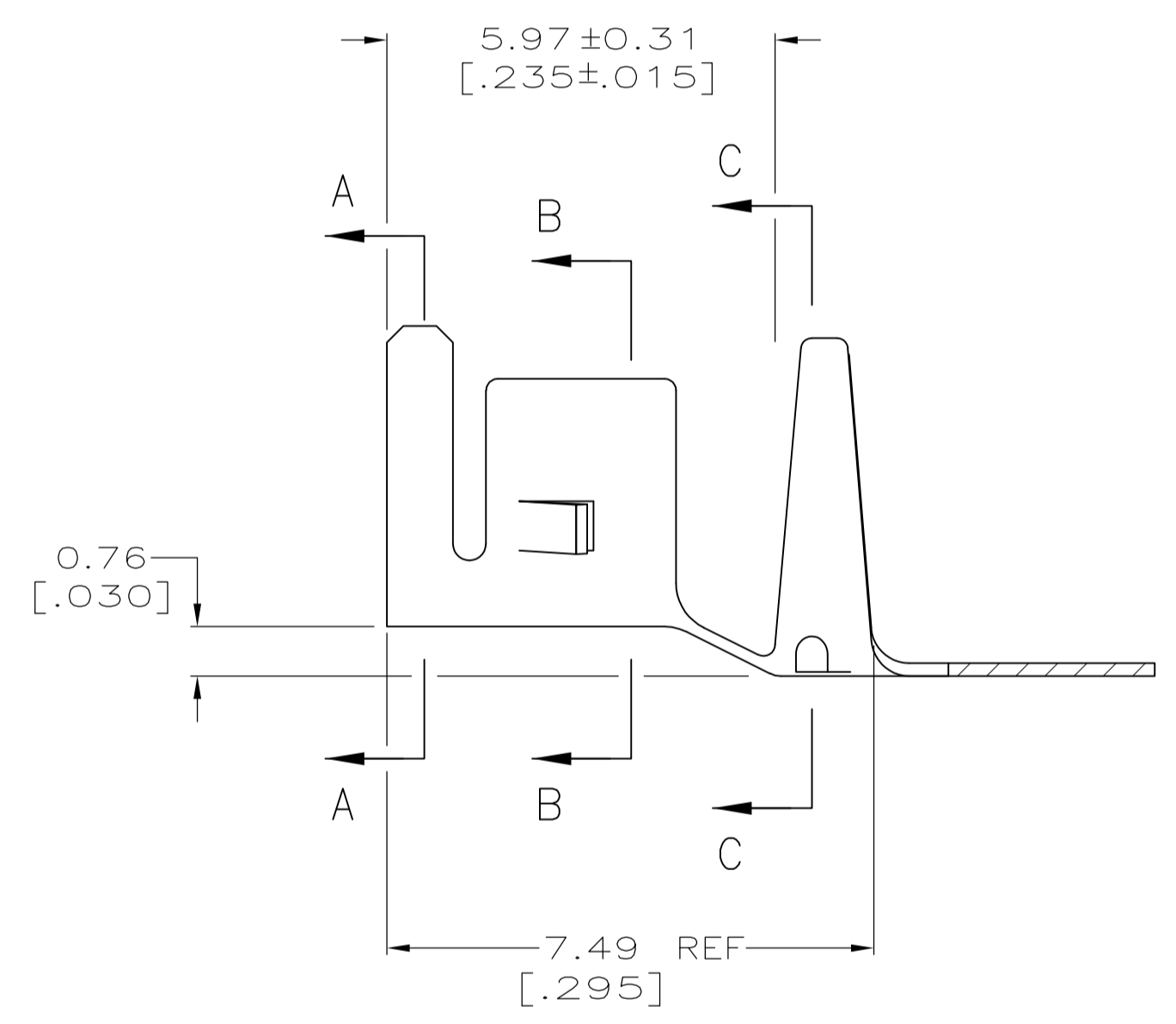
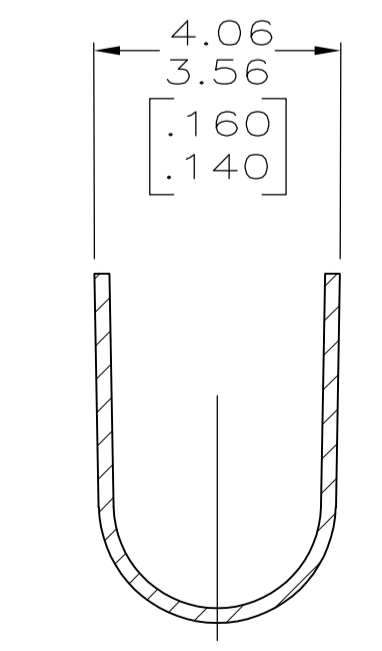


SECTION D-D

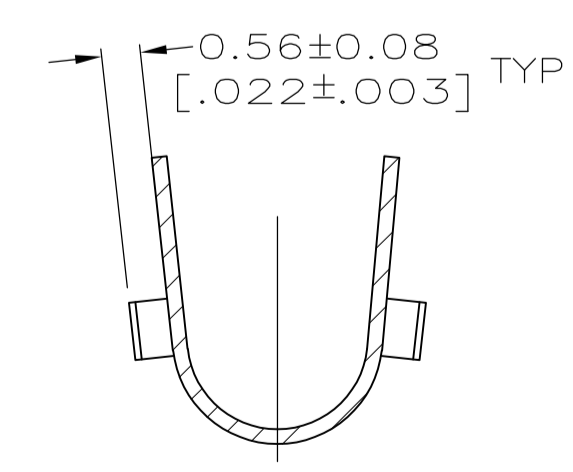
- 1 PARTS COMPLY WITH AMP SOLDERABILITY SPEC 109-11-3.
- 2 WIRE RANGE: 3-5.5 mm² [12-10 AWG].
- 3 INSULATION DIAMETER: 5.08 [.200] MAX.
- 4 DIMENSIONS IN BRACKETS ARE IN INCHES.
- 5 0.00508 [.000200] MIN BRIGHT TIN-LEAD.
- 6 0.00508 [.000200] MIN HALT TIN.



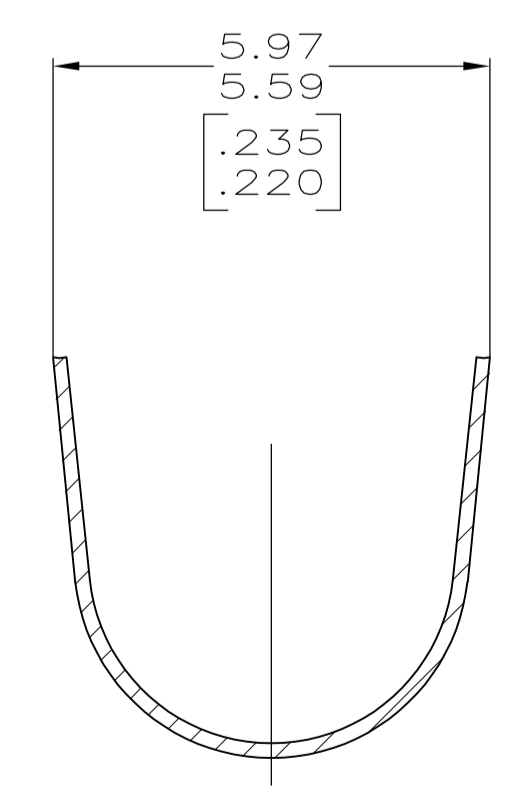
3.76 [.148]	10
3.18 [.125]	12
A	AWG



SECTION A-A



SECTION B-B



SECTION C-C

METRIC

THIS DRAWING IS A CONTROLLED DOCUMENT.

DIMENSIONS: INCHES	TOLERANCES UNLESS OTHERWISE SPECIFIED:	0 PLC ±	1 PLC ±	2 PLC ± 0.13 [.005]	3 PLC ±	4 PLC ±	ANGLES ±
MATERIAL: 0.198 [.0078] PH BRZ		FINISH		WEIGHT		A1 00779 C=794037	

DWN: S. CARPENTER 22AUG2003
 CHK: J. ELLIS 22AUG2003
 APVD: J. ELLIS 22AUG2003
 NAME: Tyco Electronics Corporation, Harrisburg, PA 17105-3608
 PRODUCT SPEC: TERMINAL, AMP-IN
 APPLICATION SPEC: Tyco Electronics
 SIZE: A1 CAGE CODE: 00779 DRAWING NO: 794037
 RESTRICTED TO: CUSTOMER DRAWING SCALE: 10:1 SHEET: 1 OF 1 REV: C1